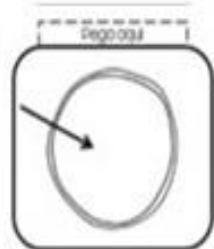
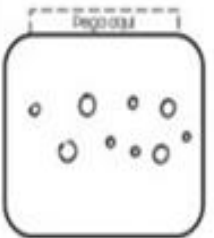


LA CELLULA ANIMALE



MEMBRANA CELLULARE INTERNA

MEMBRANA CELLULARE ESTERNA

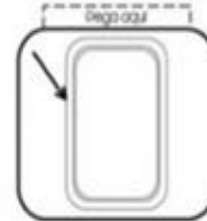
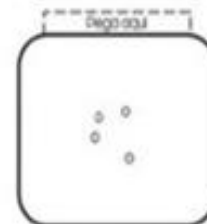
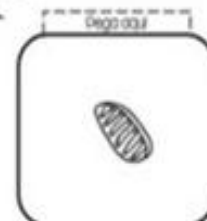
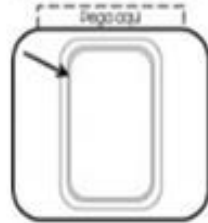
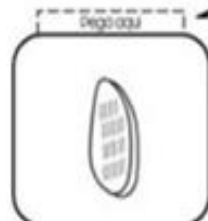
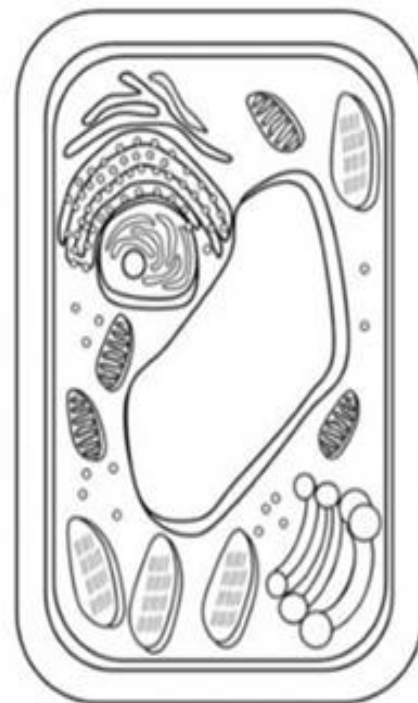
MITOCONDRI

LISOSOMI

NUCLEO

CITOPLASMA

LA CELLULA VEGETALE



MEMBRANA CELLULARE INTERNA

MEMBRANA CELLULARE ESTERNA

NUCLEO

MITOCONDRO

VACUOLO

CITOPLASMA

CLOROPLASTI